

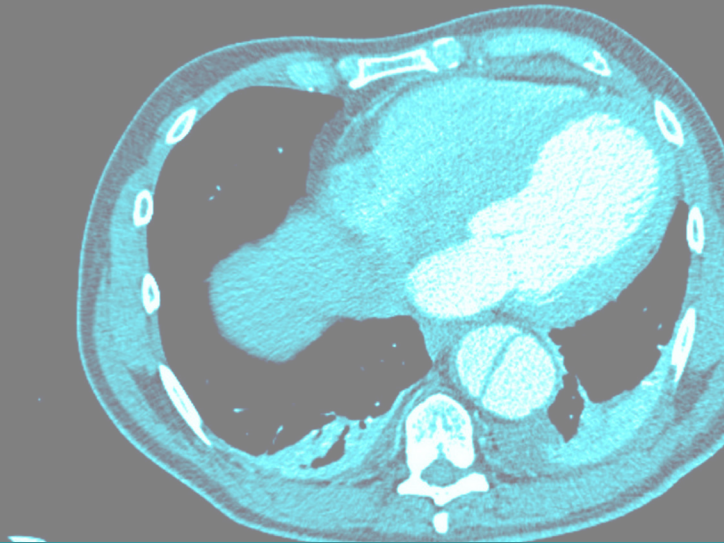
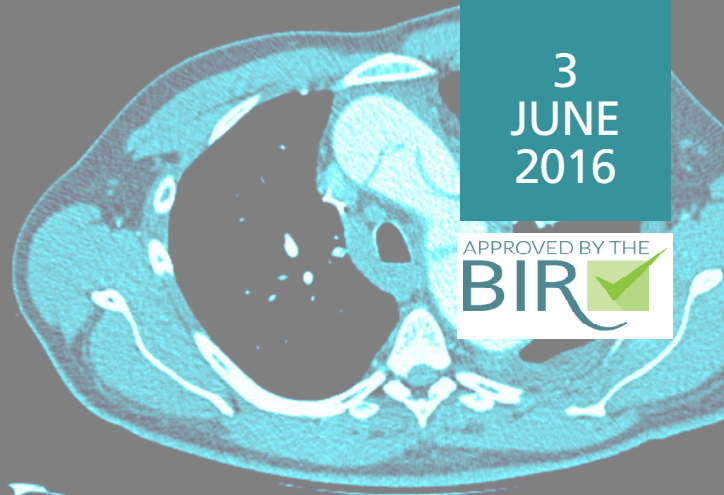
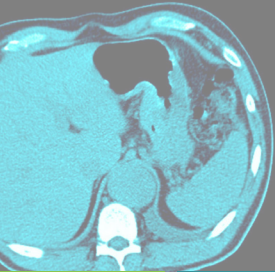
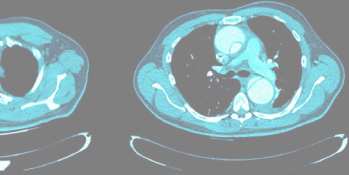
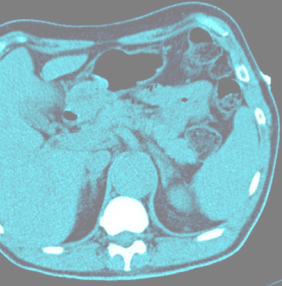
# BIR

The British  
Institute of  
Radiology



3  
JUNE  
2016

APPROVED BY THE  
BIR 



INTRODUCTION TO RADIOFREQUENCY ABLATION

Venue: Stewart House, London

CPD: 5 CREDITS (applied for)

**PHILIPS**

**SIEMENS**

# INTRODUCTION TO RADIOFREQUENCY ABLATION

Venue: Stewart House, London

Date: 3 June 2016

CPD: 5 CREDITS (applied for)

Radiofrequency ablation (RFA) is a rapidly developing minimally invasive treatment technique for certain cancers of the lung, liver and kidney. With an ageing population, more patients will present with primary or metastatic disease who may not be suitable surgical candidates. There is therefore an increasing need for clinicians and radiologists to learn about RFA and related techniques, which is cheaper than surgery with a shorter length of stay.

## Educational aims

- To familiarise clinicians and radiologists with the basic techniques, indications and complications of minimally invasive image-guided tumour ablation
- To increase the understanding of clinician and radiologists of the expected and worrisome features on post-ablation surveillance imaging
- To increase the confidence of clinicians when discussing the pros and cons of RFA to patients under their care and offer insightful advice

09:00	<b>Registration</b>	10:50	<b>Refreshments</b>
09:25	<b>Welcome and introduction</b>	11:20	<b>Microwave ablation: when, why and how</b> Speaker to be confirmed
09:30	<b>Indications, contraindications and requirements for radiofrequency ablation</b> Dr Ian Renfrew, Consultant Interventional Radiologist, Barts Health NHS Trust	11:50	<b>High intensity ultrasound ablation — an emerging therapy</b> Speaker to be confirmed
10:00	<b>Radiofrequency ablation — what is it and how is it done?</b> Dr Joo-Young Chun, Consultant Interventional Radiologist, Barts Health NHS Trust	12:20	<b>Liver post-RFA surveillance imaging: what's normal and when should I worry?</b> Dr Deborah Low, Consultant Interventional Radiologist, Barts Health NHS Trust
10:30	<b>Cryotherapy: when, why and how</b> Dr Mike Gonsalves, Consultant Interventional Radiologist, St George's NHS Trust	12:50	<b>Lunch</b>

3  
JUNE  
2016

**13:50 Lung post-RFA surveillance imaging: what's normal and when should I worry?**

Dr Tim Fotheringham,  
Consultant Interventional  
Radiologist, Barts Health NHS  
Trust

**14:20 Renal post-RFA surveillance imaging: what's normal and when should I worry?**

Dr Joo-Young Chun, Consultant  
Interventional Radiologist, Barts  
Health NHS Trust

**Interactive sessions**

**14:50 Small group case discussion 1**

**15:20 Refreshments**

**15:50 Small group case discussion 2**

**16:20 Small group case discussion 3**

**16:50 Small group case discussion 4**

**17:20 Review**

**17:30 Close**

## Registration fees

Non-member	£250
BIR Plan 1 member	£145
BIR Plan 2 member	£110
BIR Trainee member	£65
BIR Retired member	£55
BIR Student member	£55

## Join us

Join the BIR today to benefit from reduced delegate rates for our events.

For membership information visit:  
[www.bir.org.uk/join-us](http://www.bir.org.uk/join-us)

# INTRODUCTION TO RADIOFREQUENCY ABLATION

Venue: Stewart House, London

Events Centre, Stewart House, 32 Russell Square, London, WC1B 5DN

## BY TRAIN

Euston, King's Cross and St. Pancras mainline stations are within walking distance. The other London mainline stations are a short tube or taxi journey away.

## BY BUS

Bus numbers 10, 24, 29, 73, 134, 390 all travel down Gower Street which is the main Senate House entrance. Stewart House can be accessed by passing through the main entrance on to the Russell Square side.

Buses 7, 188, 68, 168, 59 & X68 stop at Russell Square. Buses 17, 45 and 46 stop in Gray's Inn Road. It is a short walk down Guildford Street to Russell Square.

## BY TUBE

Russell Square (Piccadilly Line) is the nearest tube station. Also within walking distance are:

Goodge Street (Northern Line)  
Tottenham Court Road (Central Line and Northern Line)  
Euston Square (Circle, Hammersmith & City and Metropolitan Lines)  
Euston Station (Victoria & Northern Line)  
King's Cross (Northern, Victoria, Hammersmith & City, Piccadilly, Circle and Metropolitan Lines)

## CAR PARKING

Public car parking is not available at Senate House. There are NCP carparks at Woburn Place & Bloomsbury Place.



**BIR**  
The British  
Institute of  
Radiology

 @BIR\_News

 /britishinstituteofradiology

 The British Institute of Radiology

48–50 St John Street, London, EC1M 4DG  
www.bir.org.uk

Registered charity number: 215869

