

4th Annual

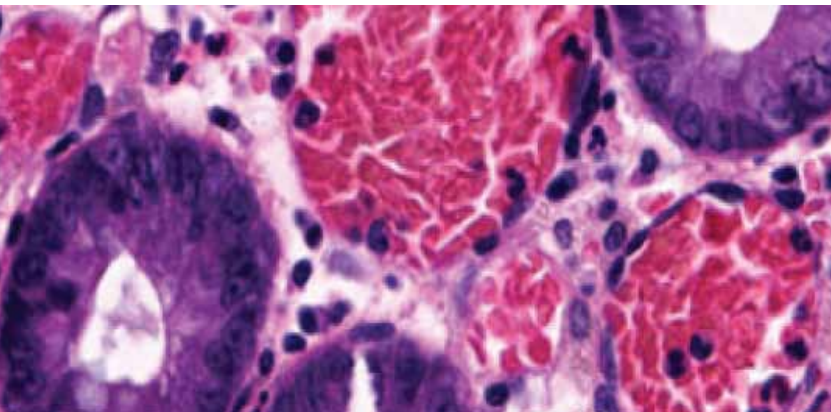
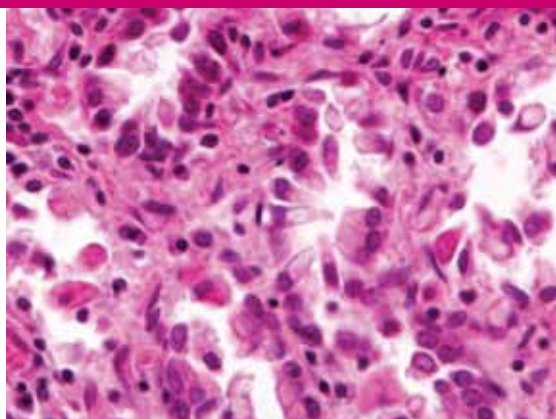
Gastroenterology & Hepatology Symposium

February 12 – 14, 2015

Marriott Harbor Beach
Fort Lauderdale, FL

NEW THIS YEAR
Optional ABIM
Maintenance
of Certification
Sessions

Register Today! ccfcme.org/DDIWEEK



Join us at the 4th Annual Gastroenterology & Hepatology Symposium – February 12 – 14, 2015

This symposium will focus on practical and evidence-based aspects of managing the difficult GI disorders in gastroenterology and hepatology practice. This 3-day symposium will provide guidance to attendees on diagnostics and management of challenging cases in clinical practice and latest advances in the field, including esophageal diseases, liver disease, inflammatory bowel disease, small bowel and pancreatic diseases, and endoscopy. Each session will include didactic presentations followed by a panel discussion about the optimal approach to the diagnosis and management of the presented topics.



OBJECTIVES TO KEEP YOU IN THE KNOW...

- Analyze recent advances in the management of hepatitis C, compensated and decompensated cirrhosis
- Identify recent advances and compare challenges in the management of inflammatory bowel disease including Crohn's disease, ulcerative colitis, and disorders of the ileal pouch
- Summarize recent advances in the diagnosis and management of pancreatic diseases
- Delineate recent advances and controversies in rectal cancer management
- Formulate a strategy for the management of challenges in GI endoscopy, including: ergonomics, safety and efficiency in the GI endoscopy unit, perioperative management of anti-thrombotic agents, large colonic polyps and CBD stones
- Identify recent advances in GI endoscopy including: advanced imaging techniques and emerging therapies for management of obesity
- Evaluate and manage the following appropriately: patients with villous blunting on small bowel biopsies, eosinophilic esophagitis, dumping syndrome, polyposis syndromes, and the malignant colonic polyp after resection

TOPICS

- Endoscopy
- Inflammatory Bowel Disease
- Capsule Endoscopy Course
- Hepatology
- Pancreaticobiliary
- Panel Discussions

WHO SHOULD ATTEND

This symposium is designed for gastroenterologists, hepatologists, general surgeons, internists, fellows and residents, physician assistants, and other interested health care professionals.

ACTIVITY DIRECTORS



Roger Charles, MD
Chair, Department of Gastroenterology
Cleveland Clinic
Weston, FL



Bret Lashner, MD
Center for Inflammatory Bowel Disease
Department of Gastroenterology
and Hepatology
Cleveland Clinic
Cleveland, OH



Andrew Ukleja, MD
Director, Nutrition Support Team
Department of Gastroenterology
Cleveland Clinic
Weston, FL



GUEST FACULTY

Gina Brown, MD

Radiologist and Honorary Professor
Gastrointestinal Cancer Imaging
Royal Marsden NHS Foundation
London, England

Amitabh Chak, MD

Professor of Medicine, CWRU School of Medicine
Department of Gastroenterology & Hepatology
University Hospitals
Cleveland, OH

Ram Chuttani, MD

Professor, Harvard Medical School
Director of Endoscopy and Chief, Interventional
Gastroenterology
Beth Israel Deaconess Medical Center
Boston, MA

Gregory Cooper, MD

Professor of Medicine, CWRU School of Medicine
Program Director, Department of Gastroenterology
UH Case Medical Center
Cleveland, OH

John Dumot, DO

Professor of Medicine, CWRU School of Medicine
Medical Director, Digestive Disease Institute
Ahuja Medical Center
Beachwood, OH

CLEVELAND CLINIC FACULTY

Pablo Bejarano, MD

Department of Laboratory Medicine
Weston, FL

Mariana Berho, MD

Department of Laboratory Medicine
Weston, FL

William Carey, MD

Director, Hepatology Center
Department of Gastroenterology and Hepatology
Director, Center for Continuing Education
Cleveland, OH

Fernando Castro, MD

Director, Gastroenterology Training Program
Department of Gastroenterology
Weston, FL

Tolga Erim, DO

Department of Gastroenterology
Weston, FL

Brenda Jimenez-Cantisano, MD

Department of Gastroenterology
Weston, FL

Sunguk Jang, MD

Department of Gastroenterology and Hepatology
Cleveland, OH

Binu John, MD

Department of Gastroenterology and Hepatology
Cleveland, OH

Luis Lara, MD

Medical Director, Pancreas Clinic
Department of Gastroenterology
Weston, FL

Ian Lavery, MD

Department of Gastroenterology and Hepatology
Cleveland, OH

Robert O'Shea, MD

Department of Gastroenterology and Hepatology
Cleveland, OH

Nagib Haboubi, MD

Distinguished Professor, University of Aleppo
Department of Colorectal Surgery
Spire Manchester Hospital
Manchester, England

John Pemberton, MD

Department of Colorectal Surgery
Mayo Clinic
Rochester, MN

Rodrigo Perez, MD

Colorectal Surgery Division, School of Medicine
University of São Paulo
São Paulo, Brazil

Douglas Pleskow, MD

Associate Clinical Professor of Medicine, Harvard
Medical School
Co-Director of Endoscopy
Beth Israel Deaconess Medical Center
Boston, MA

Ali Siddiqui, MD

Associate Professor, Jefferson Medical College
Thomas Jefferson University Hospital
Philadelphia, PA

Christopher Thompson, MD

Professor, Harvard Medical School
Department of Colorectal Surgery
Massachusetts General Hospital
Boston, MA

Nicole Palekar, MD

Department of Gastroenterology
Weston, FL

Ronnie Pimentel, MD

Director, Endoscopy
Department of Gastroenterology
Weston, FL

Feza Remzi, MD

Chair, Department of Colorectal Surgery
Director, Center for International Medical Education
Cleveland, OH

Dana Sands, MD

Department of Colorectal Surgery
Weston, FL

Janice Santisi, RN

Clinical Coordinator, Digestive Disease Institute
Cleveland, OH

Alison Schneider, MD

Director, GI Motility Lab
Department of Gastroenterology
Weston, FL

R. Matthew Walsh, MD

Chair, Department of General Surgery
Cleveland, OH

Steven Wexner, MD

Chair, Department of Colorectal Surgery
Weston, FL

Nizar Zein, MD

Department of Gastroenterology and Hepatology
Cleveland, OH

Xaralmbos Bobby Zervos, DO

Department of Gastroenterology
Weston, FL

Gregory Zuccaro, MD

Department of Gastroenterology and Hepatology
Cleveland, OH

THURSDAY, FEBRUARY 12, 2015

- 6:25 am Registration/Continental Breakfast/Exhibits
7:25 am Welcome and Introduction
Bret Lashner, MD

HEPATOLOGY

Moderators: *Fernando Castro, MD, and Bobby Zervos, DO*

- 7:30 am The Office Visit of the Compensated Cirrhotic Patient
Robert O'Shea, MD
8:00 am The Office Visit of the Decompensated Cirrhotic Patient
William Carey, MD
8:30 am Management of Hepatitis C in 2015
Nizar Zein, MD
9:00 am Panel Discussion/Question and Answer Session
9:30 am Refreshment Break/Exhibits

MISCELLANEOUS

Moderators: *Brenda Jimenez-Cantisano, MD, and Andrew Ukleja, MD*

- 10:00 am Flattened Villi on Small Bowel Biopsies: How Should We Approach These Patients? – The GI Pathologist Perspective
Pablo Bejarano, MD
10:20 am Management of the Dumping Syndrome
Andrew Ukleja, MD
10:40 am Eosinophilic Esophagitis
Alison Schneider, MD
11:00 am Polyposis Syndromes
Brenda Jimenez-Cantisano, MD

- 11:20 am The Malignant Colonic Polyp – Classification and Management After Resection: The GI Pathologist Perspective
Nagib Haboubi, MD
11:40 am Panel Discussion/Question and Answer Session
12:00 pm Lunch

CAPSULE ENDOSCOPY COURSE

Instructors: *Gregory Zuccaro, MD, and Janice Santisi, RN*

- 1:00 pm Welcome and Introduction
1:05 pm Overview of Capsule Technology
1:30 pm Software Update/Reading Tips and Tricks
2:00 pm The Patient with Obscure GI Bleeding
2:45 pm Refreshment Break/Exhibits
3:00 pm Special Situations in Capsule Endoscopy
3:20 pm Inflammatory Lesions, Tumors, and Polyps of the Small Bowel
4:00 pm Adjourn

OPTIONAL ABIM MAINTENANCE OF CERTIFICATION LEARNING SESSION

- 4:30 - 6:30 pm ABIM Medical Knowledge Module:
2014 Update in Transplant Hepatology
William Carey, MD, and Binu John, MD

Earn 10 points toward Maintenance of Certification.

FRIDAY, FEBRUARY 13, 2015

- 6:15 am Registration/Continental Breakfast/Exhibits

COMBINED MEDICAL/SURGICAL INFLAMMATORY BOWEL DISEASE SYMPOSIUM

Moderators: *Roger Charles, MD, and John Pemberton, MD*

- 7:15 am Medical Management of Severely Active Ulcerative Colitis: When IV Steroids Fail
Nicole Palekar, MD
7:30 am Post-Operative Medical Management of Crohn's Disease: Who, What, and When?
Bret Lashner, MD
7:45 am What Determines Indeterminate Colitis?
Nagib Haboubi, MD
8:00 am Diagnosing Dysplasia in Ulcerative Colitis: How Can the Term "Indefinite Dysplasia" Disappear?
Mariana Berho, MD
8:15 am Surgery – Do Anti-TNF Agents Change Our Surgical Strategy?
Ian Lavery, MD
8:30 am Reoperative Surgery in IBD
Feza Remzi, MD
8:45 am Panel Discussion/Question and Answer Session
9:15 am Refreshment Break/Exhibits

CHALLENGES IN GASTROINTESTINAL ENDOSCOPY

Moderator: *Ronnie Pimentel, MD*

- 10:00 am Don't Hurt Yourself: Ergonomics in GI Endoscopy
Sunguk Jang, MD
10:20 am Safety and Efficiency in the Gastrointestinal Endoscopy Unit
John Dumot, DO
10:40 am Management of Anticoagulants/Antithrombotic Agents in the Peri-Endoscopic Period
Fernando Castro, MD
11:00 am Management of Large CBD Stones
Ram Chuttani, MD

- 11:20 am The Difficult Colonic Polyp: My Approach
Gregory Zuccaro, MD
11:40 am Panel Discussion/Question and Answer Session
12:00 pm Lunch

ONCOLOGY – NEW DIRECTIONS IN RECTAL CANCER MANAGEMENT

Moderator: *Steven Wexner, MD*

- 1:30 pm Using MRI to Determine Treatment
Gina Brown, MD
1:45 pm Optimizing Therapy with Optimal Staging
Mariana Berho, MD
2:00 pm Endoscopic Submucosal Dissection
Amitabh Chak, MD
2:15 pm Transanal Endoscopic Surgery
Dana Sands, MD
2:30 pm Wait and Watch: When Does Neoadjuvant Therapy Become the Only Therapy?
Rodrigo Perez, MD
2:45 pm Treatment of Obstructing Rectal Cancer
Tolga Erim, DO
3:00 pm Panel Discussion/Question and Answer Session
3:45 pm Adjourn

OPTIONAL ABIM MAINTENANCE OF CERTIFICATION LEARNING SESSION

- 4:30 - 6:30 pm ABIM Medical Knowledge Module:
2013 Update in Gastroenterology
William Carey, MD, and Binu John, MD

Earn 10 points toward Maintenance of Certification.

SATURDAY, FEBRUARY 14, 2015

- 6:30 am Registration/Continental Breakfast/Exhibits

PANCREAS

Moderator: *Luis Lara, MD*

Acute Pancreatitis

- 7:30 am Are Ranson's Criteria Still Relevant in 2015? Diagnosis and Predictors of Acute Pancreatitis
Ali Siddiqui, MD
7:50 am NSAID, Fluids, and Stents: How I Try to Prevent Post-ERCP Acute Pancreatitis
Tolga Erim, DO

Chronic Pancreatitis Management: Should the Third Rule of Surgery Apply?

- 8:10 am Medical Therapies for Chronic Pancreatitis
Luis Lara, MD
8:30 am Endoscopic Therapies for Chronic Pancreatitis
Douglas Pleskow, MD
8:50 am Surgical Therapies for Chronic Pancreatitis
Matthew Walsh, MD
9:10 am Panel Discussion/Question and Answer Session
9:30 am Refreshment Break/Exhibits

ENDOSCOPY II

Moderator: *Tolga Erim, DO*

- 10:00 am Utility of Advanced Imaging Techniques in GI Endoscopy
Amitabh Chak, MD
10:25 am The Diminutive Colonic Polyp: Should We Resect and Discard or Image and Ignore? My View
Gregory Cooper, MD
10:50 am The Bariatric Endoscopist: Current and Emerging Endoscopic Therapies for Obesity
Christopher Thompson, MD
11:15 am Management of Foreign Bodies in the Upper Gastrointestinal Tract
John Dumot, DO
11:40 am Panel Discussion/Question and Answer Session
12:00 pm Adjourn

GENERAL INFORMATION

Location

Marriott Harbor Beach Resort & Spa
3030 Holiday Drive
Fort Lauderdale, Florida 33316
Phone: 954.525.4000 or 877.707.8999
Website: marriottharborbeach.com

Hotel Accommodations

A limited block of rooms has been reserved at the Marriott Harbor Beach Resort & Spa on a first-come, first-served basis until Wednesday, January 14, 2015. To make your reservations, visit www.cfcme.org/DDIWeek or call 800.266.9432. Identify yourself as being with the **Cleveland Clinic DDI Week** for a special rate of \$340 single/double plus tax. Group rates will be offered three days prior and three days following the dates of the room block, based on availability.

Hotel Parking

Discounted parking is available at the rates noted below:

Daily Commuter Self-Parking	\$15
Overnight Self-Parking	\$25
Overnight Valet	\$30

Information

For further information about this symposium, contact the Cleveland Clinic Center for Continuing Education.

Local: 954.659.5490
Toll Free: 866.293.7866
Website: cfcme.org/DDIWeek

Registration and Cancellation

Preregistrations are accepted until 11:59 pm ET, February 7, 2015. Register on site after this date. In case of cancellation, a full refund will be made if canceled by January 27, 2015. After January 27, 2015, a \$75 cancellation fee will be deducted from your refund upon written notification of your cancellation. Once access to the mobile app is distributed, no refunds will be issued. **NO REFUNDS WILL BE ISSUED AFTER February 28, 2015.**

For questions about registration, email us at cmeregistration@ccf.org or call 216.448.0777.

Cleveland Clinic Center for Continuing Education reserves the right to cancel or postpone an activity at our sole discretion. In the unlikely event that this occurs, any registration fee(s) paid will be refunded. Be advised that Cleveland Clinic is not responsible for related costs including airline tickets, hotel costs, or any similar fee penalties incurred as a result of any trip cancellations or changes.

Americans with Disabilities Act

The Cleveland Clinic Foundation Center for Continuing Education fully intends to comply with the legal requirements of the Americans with Disabilities Act. If you need assistance, please notify us at least two weeks prior to the activity.

Accreditation

The Cleveland Clinic Foundation Center for Continuing Education is accredited by the Accreditation Council for Continuing Medical Education to provide continuing medical education for physicians.

The Cleveland Clinic Foundation Center for Continuing Education designates

- Gastroenterology & Hepatology Symposium live activity for a maximum of 17 *AMA PRA Category 1 Credits*[™].
- Optional ABIM Medical Knowledge Module: 2014 Update in Transplant Hepatology live activity for a maximum of 2 *AMA PRA Category 1 Credits*[™].
- Optional ABIM Medical Knowledge Module: 2013 Update in Gastroenterology live activity for a maximum of 2 *AMA PRA Category 1 Credits*[™].

Physicians should claim only the credit commensurate with the extent of their participation in the activity.

Participants claiming CME credit from this activity may submit the credit hours to the American Osteopathic Association for Category 2 credit.

Other Credits

American Academy of Physician Assistants (AAPA) accepts certificates of participation for educational activities certified for *AMA PRA Category 1 Credits*[™] from organizations accredited by the ACCME. Physician Assistants may receive a maximum of 17 hours for credit for completing these programs.

This program is pending approval by the Florida Board of Nursing, NCE Provider #2334. Each nurse should claim only those hours that he/she actually spent in this educational activity. To receive credit, nurses are required to provide: license number, completed course evaluation, completed attendance record form.

Faculty Disclosure

The Cleveland Clinic Foundation Center for Continuing Education has implemented a policy to comply with the current Accreditation Council for Continuing Medical Education Standards for Commercial Support requiring resolution of all faculty conflicts of interest. Faculty declaring a relevant commercial interest will be identified in the activity syllabus.

Study References

Free for all attendees!

Included with your full registration is a complimentary mobile app available for download on tablets and smartphones, incorporating PowerPoint slides with note-taking and highlighting capability. Take notes at the activity and continue reviewing when you get home.



Recording or reproducing of this activity in any format is prohibited.

Fees

Registration fee includes: continental breakfasts, refreshment breaks, two lunches, and faculty presentations available online via mobile app or laptop.

Visit cfcme.org/DDIWeek for complete registration information.

Category	Fee
Physician	\$525
Resident*	\$425
Non-Physician	\$350
CCF Alumnus	\$425

Optional ABIM Sessions	
Thursday, February 12, 2015 – ABIM Medical Knowledge Module: 2014 Update in Transplant Hepatology	\$200
Friday, February 13, 2015 – ABIM Medical Knowledge Module: 2013 Update in Gastroenterology	\$200
Thursday, February 12, 2015 – ABIM Medical Knowledge Module: 2014 Update in Transplant Hepatology and Friday, February 13, 2015 – ABIM Medical Knowledge Module: 2013 Update in Gastroenterology	\$300

*Letter from program director is required to receive the discounted fee. If letter is not received two weeks prior to the activity, the full physician fee will be charged.



DDI Week 2015

February 10 – 18, 2015



Cleveland Clinic

The Cleveland Clinic Foundation
9500 Euclid Avenue, AC313
Cleveland, OH 44195

NON-PROFIT ORG.
U.S. Postage Paid
Cleveland, OH
Permit No. 1918



4th Annual

Gastroenterology & Hepatology Symposium

February 12 – 14, 2015

Marriott Harbor Beach
Fort Lauderdale, FL

NEW THIS YEAR
Optional ABIM
Maintenance
of Certification
Sessions

Register Now! ccfcme.org/DDIWEEK