



BSGAR Live Summer Meeting 2025

Stanbrook Abbey Hotel

5th & 6th June 2025

Meeting Presidents: Dr Rochelle Gamage,
Dr James Plowright and Dr Sharan Wadhvani

www.BSGAR.org/annual-meeting



Clinical collaboration: Making the most of your MDT

A warm welcome to BSGAR 2025 Summer meeting in the beautiful countryside of Worcestershire. Whether you're a trainee or established subspecialist, get ready for a new take on some tricky topics.

This summer's offering is the perfect opportunity to focus on challenging, complex scenarios across the breadth of subspecialty abdominal radiology, with a particular focus on the value of effective collaboration with our multidisciplinary teams.

Delegates will rotate through 4 dedicated small group workshops led by an expert pairing of a specialty radiologist and a clinician, heading up the discussion of curated cases with an emphasis on multidisciplinary working, offering in-workshop clinical perspectives to illustrate the key considerations and highlighting the potential pitfalls.

Our workshops include:

- IBD: MDT conundrums
- Early rectal cancer: Evidence and Context
- Endoscopy for non-endoscopists: what all Radiologists need to know
- Mastering the Cholangios: Cholangiocarcinoma vs Cholangiopathy

This meeting will be held at Stanbrook Abbey Hotel, a former Grade II listed monastery dating back to the 16th century, set in stunning gardens amongst the picturesque Worcestershire countryside.

On the evening of the first day we are introducing a 'Fireside chat'. The aim of this informal session is to present some of those key "lightbulb moment" concepts which often fall into the category of "things which I wish I'd known earlier in my career". The sort of thing which no-one formally teaches you but which are so valuable day to day as we go about our work. Several senior (i.e. older) members will share experiences and revelations from their own careers, with an emphasis on fun, learning, reflection and discussion.

The Abbey's storied heritage is magnificently preserved through its thoughtfully maintained original architecture and, as part of our social programme, delegates are invited to explore the premises; whether that's taking advantage of a walking tour through the abbey and its grounds delivered by a local expert or venturing out on a gentle (or not so gentle) hike in the surrounding countryside. There will be a drinks reception followed by dinner at the end of day 1.

An interactive quiz to close the meeting will consolidate the content from our bespoke MDT workshops, with the first prize of course being the much coveted, limited edition BSGAR mug.

The meeting is the perfect way to connect with GI radiology colleagues gathered from around the UK. We look forward to welcoming you in person.



Rochelle Gamage
Meeting President



James Plowright
Meeting President



Sharan Wadhvani
Meeting President



BSGAR Live Summer Meeting 2025

Stanbrook Abbey Hotel

5th & 6th June 2025

Meeting Presidents: Dr Rochelle Gamage,
Dr James Plowright and Dr Sharan Wadhvani

www.BSGAR.org/annual-meeting



THURSDAY 5th June 2025

11:00 – 12:00 **Arrival, Registration and Coffee – Garden Pavilion**

12:00 – 12:15 **Introduction/housekeeping – Garden Pavilion**
Dr Rochelle Gamage, Worcester, Dr James Plowright, Birmingham & Dr Sharan Wadhvani, Birmingham/Worcester

Workshop 1 – Garden Pavilion

IBD: MDT conundrums

Dr Shaheen Cader, Worcester & Mr Richard Lovegrove, Worcester

12:15 – 13:30

Workshop 2 – Great Anne's Hall

Early Rectal Cancer: Evidence and Context

Dr Sharan Wadhvani, Birmingham/Worcester & Mrs Deborah Nicol, Worcester

13:30 – 14:30 **Lunch – Garden Pavillion**

Workshop 1 – Garden Pavilion

IBD: MDT conundrums

Dr Shaheen Cader, Worcester & Mr Richard Lovegrove, Worcester

14:30 – 15:45

Workshop 2 – Great Anne's Hall

Early Rectal Cancer: Evidence and Context

Dr Sharan Wadhvani, Birmingham/Worcester & Mrs Deborah Nicol, Worcester

15:45 – 16:15 **Coffee and Sponsors – Garden Pavilion**

16:15 – 17:15 **Fireside Chat – 'What I wish my younger self had known' - Garden Pavilion**
Dr Ian Zealley, Dundee

18:30 **Drinks and Guided Tour – Callow Great Hall**

20:00 **Dinner - Garden Pavilion**



BSGAR Live Summer Meeting 2025

Stanbrook Abbey Hotel

5th & 6th June 2025

Meeting Presidents: Dr Rochelle Gamage,
Dr James Plowright and Dr Sharan Wadhwani

www.BSGAR.org/annual-meeting



FRIDAY 6th June 2025

09:15 – 10:00 Abbey Trail Walk – Hotel Reception

10:10 – 10:15 **Welcome** – Garden Pavilion

Dr James Plowright, Birmingham & Dr Sharan Wadhwani, Birmingham/Worcester

Workshop 3 – Great Anne's Hall

Endoscopy for non-endoscopists: What all Radiologists needs to know

Dr Edmund Godfrey, Cambridge & Dr Graham Baker, Worcester

10:15 – 11:30

Workshop 4 – Garden Pavilion

Mastering the Cholangios: Cholangiocarcinomas vs Cholangiopahy

Dr Brin Mahon, Birmingham & Mr Ravi Marudanayagam, Birmingham

11:30 – 12:00 **Coffee and Sponsors** – Garden Pavillion

Workshop 3 – Great Anne's Hall

Endoscopy for non-endoscopists: What all Radiologists needs to know

Dr Edmund Godfrey, Cambridge & Dr Graham Baker, Worcester

12:00 – 13:15

Workshop 4 – Garden Pavilion

Mastering the Cholangios: Cholangiocarcinomas vs Cholangiopahy

Dr Brin Mahon, Birmingham & Mr Ravi Marudanayagam, Birmingham

13:15 – 14:15 **Lunch** – Garden Pavilion

14:15 - 16:15 **Quiz** – Garden Pavilion

*Dr Rochelle Gamage, Birmingham, Sharan Wadhwani, Birmingham/Worcester &
Dr James Plowright, Birmingham*

16:15 – 16:30 **Close**





Your Partner in Smarter Teleradiology

Since 2008, we've been Europe's leading independent teleradiology partner. With a global presence and local expertise, our 250 sub-specialty radiologists handle over 500,000 examinations annually. Operating in 7 countries, we provide dedicated IT support and exceptional service, ensuring seamless, high-quality results for every client.

Why Radiologists Choose Us?

Work on Your Terms

- Choose what and when to report
- Self-paced worklists
- Indemnity insurance included

Transparent Pay

- Competitive pay
- Time-based rates, not volume
- Real-time earnings tracker

Career Growth & Learning

- Supportive REALM and peer review
- Radiopaedia Premium access
- Career development

Support. Quality. Flexibility. Growth.

Partner with a team that puts radiologists first – we grow together.

Getting Started Couldn't Be Easier

Join a supportive radiology team built around your strengths, preferences, and goals.

- **Rapid Onboarding** – Hassle-Free
- **Fully Equipped Workstation** – space-saving compact tower and diagnostic monitors
- **Complete Clinical Access** – Priors, reports, RIS & PACS – all integrated
- **Always-On Support** – Operational and IT help when you need it

JOIN US TODAY!



SKATERTM

COMPLETE DRAINAGE SYSTEM

The Confident Choice

Designed for Superior Performance

Up to 50% greater kink resistance

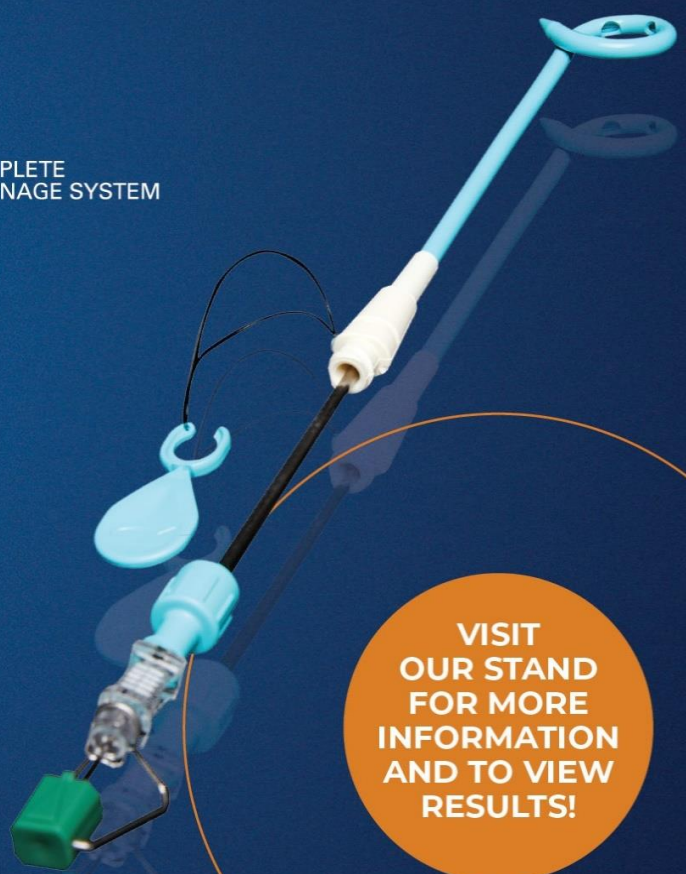
Maintaining catheter patency and providing patient comfort

SKATER's SLIP-COATTM hydrophilic coating and internal locking tip

Allowing an accurate and easy insertion

Largest, oval drainage holes

Resulting in greater drainage flow and volume



VISIT
OUR STAND
FOR MORE
INFORMATION
AND TO VIEW
RESULTS!

Superior Samples

with **BIOPINCE[®] ULTRA**
FULL CORE BIOPSY INSTRUMENT



- Tri-Axial core, cut and capture system
- Reduced risk of crush artifact and tissue fragmentation
- Full cylindrical quality specimen for clinical diagnosis

PROVEN
PERFORMANCE ✓
BETTER QUALITY ✓
MAXIMUM LENGTH ✓

MORE POWER ✓
SUPERIOR
VOLUME ✓



Conventional
Side-notch
Biopsy Instrument



BioPince Ultra
Full Core Biopsy
Instrument

ArgonMedical.com

ARGON
MEDICAL DEVICES

BRACCOMMITMENT

We provide innovative products for your cardiac PET service and across interventional and diagnostic cardiology procedures.

But more than that, we're there for you. Not just supplying, but supporting and servicing with an extraordinary level of commitment.

 01865 634 444

 For service support please contact
blo.service@bracco.com

 For sales support please contact
blosalesupportgb@bracco.com

www.bracco.com



BSGAR LIVE
SUMMER MEETING 2025

5-6 JUNE, STANBROOK ABBEY HOTEL, WORCS.

JOIN US IN THE GARDEN PAVILION TO
LEARN MORE ABOUT OUR CONCIERGE SERVICES.

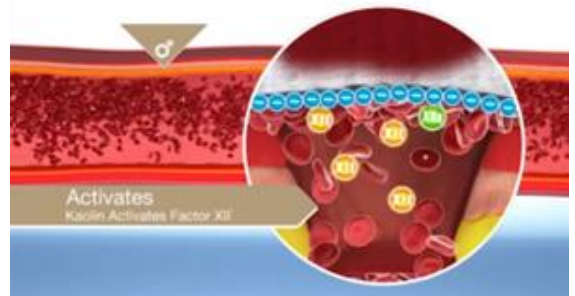


LIFE FROM INSIDE



BLEEDING CONTROL IN INTERVENTENTIAL RADIOLOGY

QuikClot is a proprietary non-woven gauze that is impregnated with kaolin. Kaolin activates Factor XII on the intrinsic pathway, accelerating the natural clotting cascade to promote faster bleeding control.^{1,2}

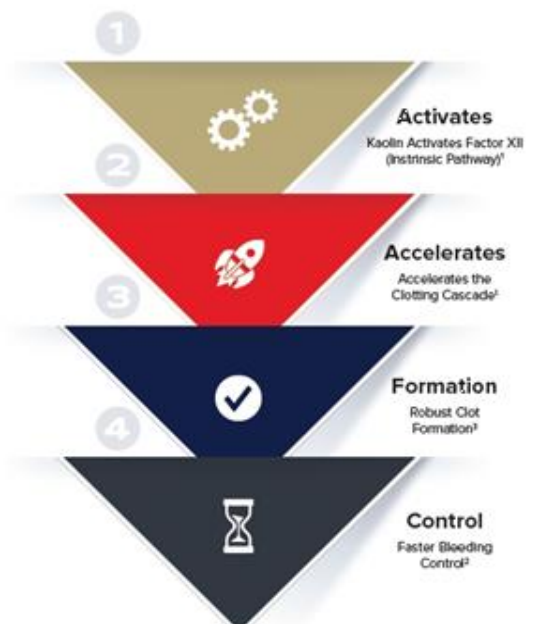


Where QuikClot is used

- ✓ Femoral and radial artery closure
- ✓ As an adjunct to arterial closure post VCD use
- ✓ Bleeding AV fistulas
- ✓ Port pockets and oozing PICC, central or arterial lines

Potential benefits to using QuikClot

- ✓ Higher patient throughput with faster time to haemostasis
 - ✓ Alleviate recovery room bottlenecks and expedite time to discharge
 - ✓ Get more procedures onto the daily list
 - ✓ Simple and intuitive to use
- Please email info@apmedtech.com for more information



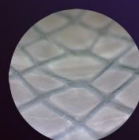
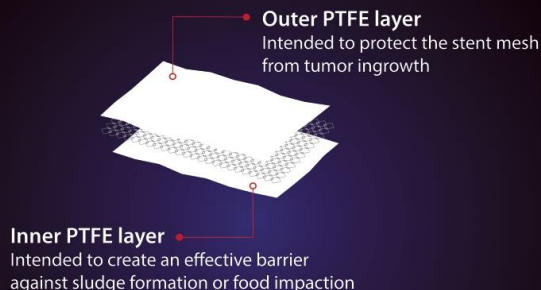


HILZO® Esophageal ATM Stent



1 PTFE Cover (Stent body)

Inner and outer PTFE layer construction has been designed to reduce events of tumor ingrowth and food impaction.



Inner view of the HILZO covered stent

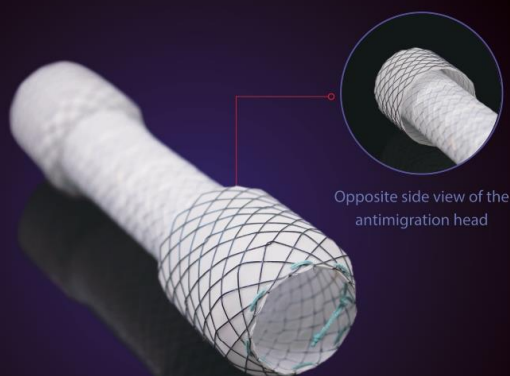
PTFE is biocompatible, anti-adherent and strongly resistant to chemicals like stomach acids.



BCM Co., Ltd 178, Deoksan-ro, Ilsanseo-gu, Goyang-si, Gyeonggi-do, S. Korea
www.bcmglobal.co.kr Tel. +82.31.926.2727 Fax. +82.31.926.2728

2 Antimigration heads

Both silicone covered heads were designed to have an efficient resistance against migration in the esophageal tract.



■ Ordering Information

Art. No.	Stent				Introducer System	
	Diameter (mm)	Length (cm)	Head		Diameter	Usable Length (cm)
EVP1806AC1	18	6	26	2	16Fr	70
EVP1808AC1		8		2		
EVP1810AC1		10		3		
EVP1812AC1		12		3		
EVP1815AC1		15		3		
EVP2006AC1	20	6	28	2	16Fr	70
EVP2008AC1		8		2		
EVP2010AC1		10		3		
EVP2012AC1		12		3		
EVP2015AC1		15		3		
EVP2206AC1	22	6	30	2	18Fr	70
EVP2208AC1		8		2		
EVP2210AC1		10		3		
EVP2212AC1		12		3		
EVP2215AC1		15		3		

■ Basic features

Over-the-wire delivery system (70cm)



1 retrieval string at the proximal end



6 radiopaque markers



Head features comparison (standard model vs. ATM)



HILZO® Esophageal stent

- Silicone covered
- 1.5cm-long each
- Static heads



HILZO® Esophageal ATM stent

- Silicone covered
- 2~3cm-long each
- Moves upward and downward



Contact us sales@bcmglobal.co.kr



medica:

Join us



Be part of an international network of over 750 Radiologists



Highest volume of reporting work amongst competitors



One free virtual course per year with Educate by Medica (up to the value of £650)



Access to prior reports for every patient

\\ Thanks to the 'Prestige' service, I've been able to increase my productivity significantly. The personal support I receive makes all the difference in streamlining my work. \\

Rogier Hagenbeek,
Consultant Radiologist

medica.co.uk

recruitment@medica.co.uk

01424 762111

CT-Navigation™
 is an ergonomic universal solution that provides stereotactic needle guidance, enabling intuitive pre-planning and continuous control throughout a wide range of procedures, from diagnosis to treatment.

Push the boundaries of CT-guided procedures

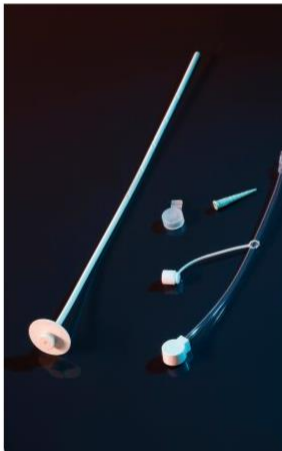
- Reduce Procedure Time¹
- Increase Accuracy¹
- Simplify Workflow¹
- Reduce Radiation Dose^{1,2}
- Expand Indications¹
- Gain Confidence

Solution for most percutaneous interventions*



BVM

24 hours a day



Providing excellent solutions to Radiology Departments
 and patients.

